



Light efficiency:

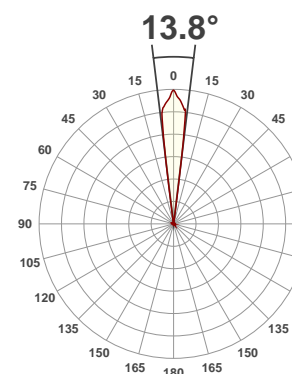
13 Lumen/Watt

Light quality:

CRI: 98.1

Color temperature:

3017 K



Product name:

Encore Profile 1000 WW

Test:

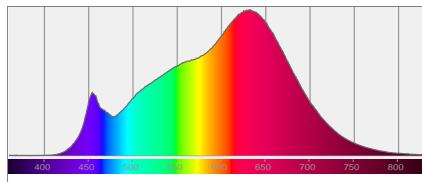
Zoom In

Date:

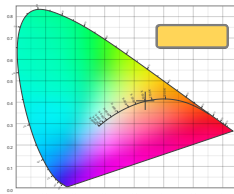
4/27/2017

Output: 1510 lm Power consumption: 119 W Peak: 35224 cd

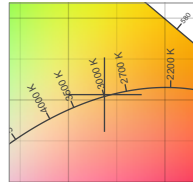
Spectral distribution



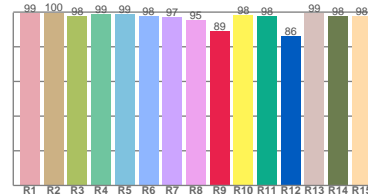
Color coordinates



Zoom color point

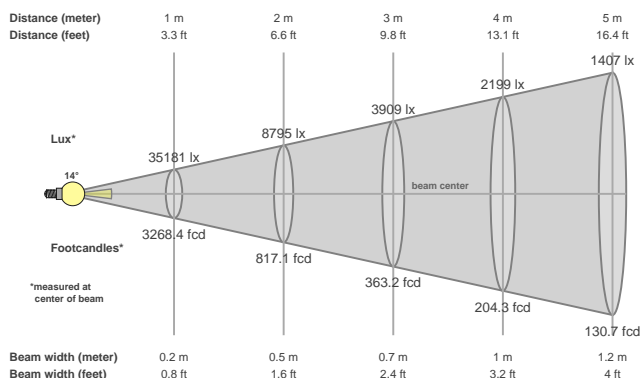


CRI R values



Color temperature	Color rendering index	Red component	Color fidelity	Color gamut	Color quality scale	Color coordinate cie 1931	Color coordinate cie 1931	Color coordinate	Color coordinate	Color divition from black body
CCT	CRI	CRI R9	TM30 Rf	TM30 Rg	CQS	x	y	u	v	Δuv
3017 K	98.1	89.2	93.3	99.0	95.4	0.437	0.407	0.250	0.348	0.0009

Beam details



Beam angles

Beam angle 50%	Field angle 10%	Cutoff angle 2,5%
13.8°	15.3°	16.6°

Beam intensities

Peak intensity	Int. ratio in 120° cone	Int. ratio in 90° cone
35224 cd	1.0%	1.0%

Power

Power	Power factor	Power frequency
119 W	0.65	60 Hz

Nominal voltage	Voltage	Current
230 V	113 V	1.62 A

Beam intensities from 1-20m

1m	2m	3m	4m	5m	6m	7m	8m	9m	10m	11m	12m	13m	14m	15m	16m	17m	18m	19m	20m
3.3ft	6.6ft	9.8ft	13.1ft	16.4ft	19.7ft	23ft	26.2ft	29.5ft	32.8ft	36.1ft	39.4ft	42.7ft	45.9ft	49.2ft	52.5ft	55.8ft	59.1ft	62.3ft	65.6ft
35181lx	8795lx	3909lx	2199lx	1407lx	977lx	718lx	550lx	434lx	352lx	291lx	244lx	208lx	179lx	156lx	137lx	122lx	109lx	97lx	88lx
3268.4fcd	817.1fcd	363.2fcd	204.3fcd	130.7fcd	90.8fcd	66.7fcd	51.1fcd	40.4fcd	32.7fcd	27fcd	22.7fcd	19.3fcd	16.7fcd	14.5fcd	12.8fcd	11.3fcd	10.1fcd	9.1fcd	8.2fcd